

# Luminaire test report

## Product Mark

Product Type : Zoombar\_2.2\_24V\_562mA

Temperature : 22'C

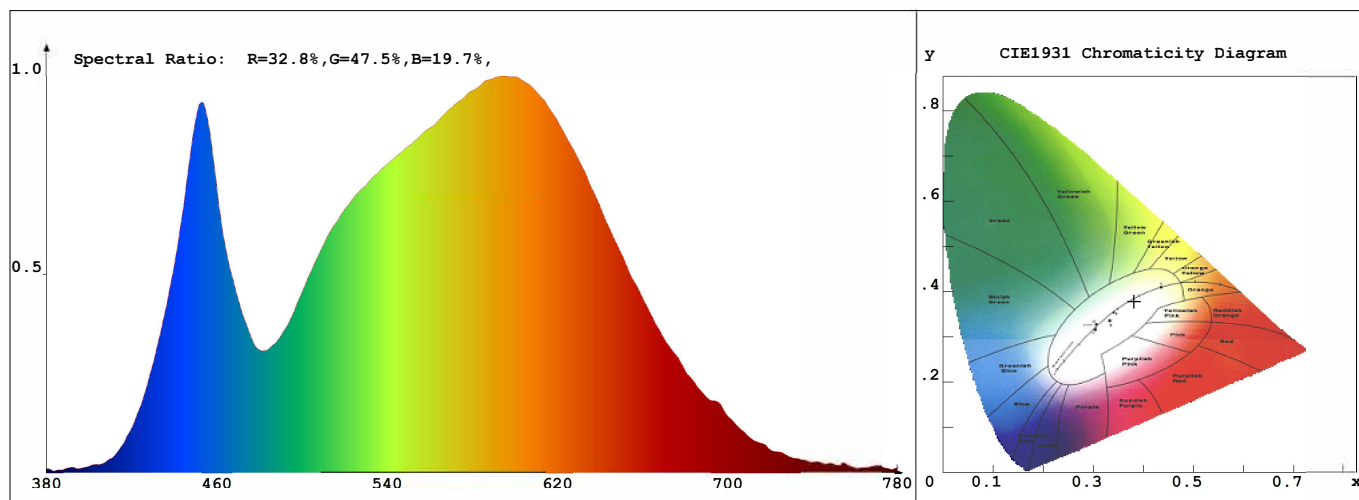
Operator : EL

Remark: LUWA 700mA 5DEG

Manufacturer : Lumen Warm Inc.

Humidity : 19%

Test Date : 2020-04-22 10:56:23



## Chroma Parameters

Chro.Coar.:x=0.3812 y=0.3783 u=0.2250 v=0.3349 duv=0.0005

CCT: 3992K Dominant Wave.:578.8nm Purity:27.9% Centre Wave:578.1nm

Flux RGB Ratio:R=17.6%,G=79.9%,B=2.4% Peak Wave:593.7nm Half Width:150.7nm

## Rendering Index:Ra= 83.1 CRI= 79.1

R1 =82 R2 =89 R3 =94 R4 =83 R5 =82 R6 =84 R7 =86 R8 =66

R9 =12 R10=73 R11=81 R12=65 R13=83 R14=97 R15=76

Fidelity Index(Rf)=83.0

Gamut Index(Rg)=96.1

## Photo Parameters

Flux:236.94lm

Effi.:17.6lm/W

Radiant:659.2mW

Iv:0.0mcd

Efficiency:0.54

Effi Level:B (EU 874-2012)

## Ele. Parameters

Voltage:U=24.00V

Current:I=0.5620A

Power:P=13.480W

Power Factor:PF=1.000

## Instrument state

Instrument:Hopoo HP8000

Integral Time: 692.726ms

VPeak: 13369

VDark: 1317

Scan Range: 380-780nm

Product ID: 201901623

# IES TM-30-2015 Test Report

## Product Mark

Product Type : Zoombar\_2.2\_24V\_562mA

Temperature : 22'C

Operator : EL

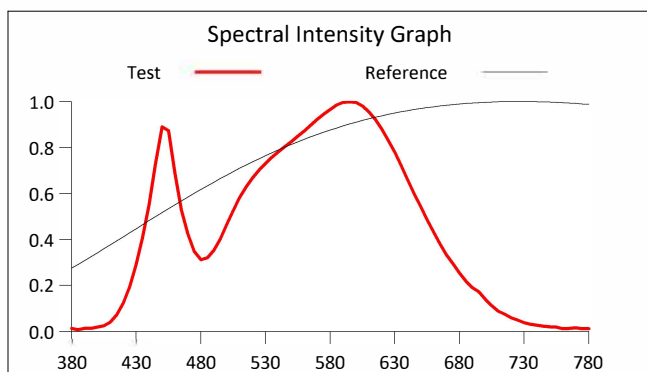
Remark: LUWA 700mA 5DEG

Manufacturer : Lumen Warm Inc.

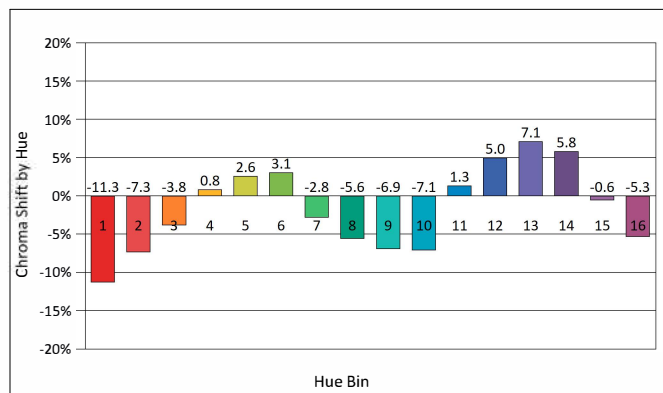
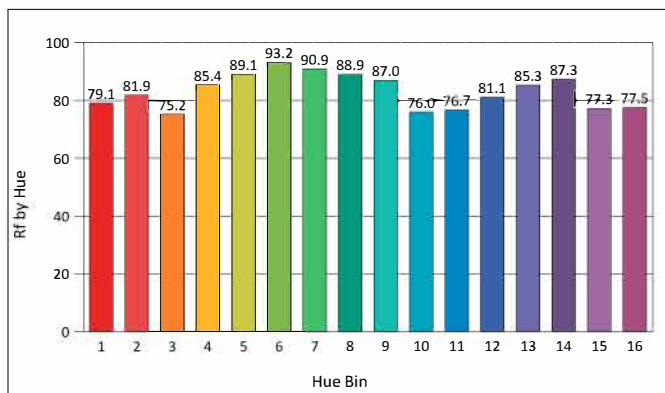
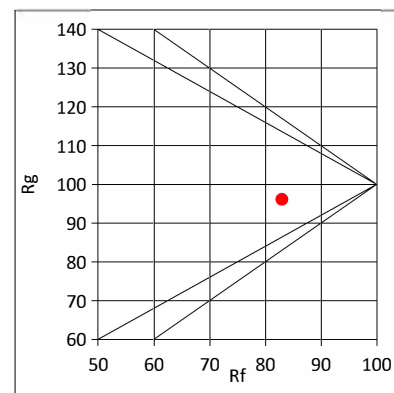
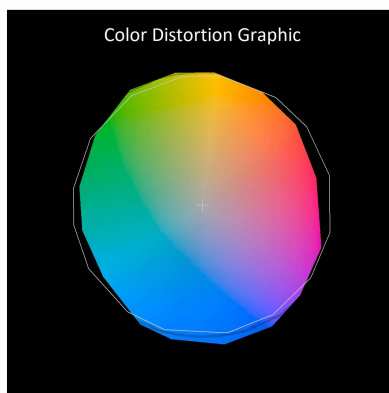
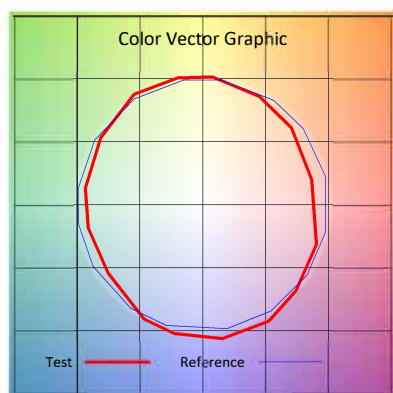
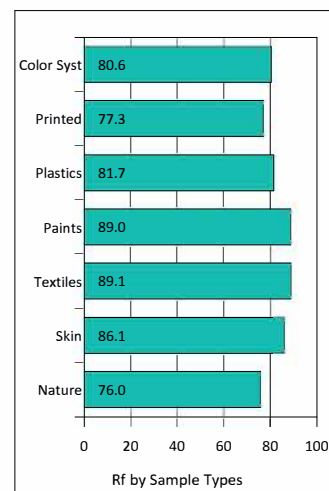
Humidity : 19%

Test Date : 2020-04-22 10:56:23

Rf: 83.0 CCT(K): 3992 u': 0.2250  
 Rg: 96.1 LER: 326.1 Duv: 0.0005 v': 0.3349



Hue Bin	Graphic Shifts (%)		
	Rf	Chroma	Hue
1	79.1	-11.3%	-1.0%
2	81.9	-7.3%	5.9%
3	75.2	-3.8%	11.3%
4	85.4	0.8%	8.2%
5	89.1	2.6%	4.7%
6	93.2	3.1%	-1.6%
7	90.9	-2.8%	-4.1%
8	88.9	-5.6%	-1.9%
9	87.0	-6.9%	4.0%
10	76.0	-7.1%	11.0%
11	76.7	1.3%	13.8%
12	81.1	5.0%	7.5%
13	85.3	7.1%	-4.9%
14	87.3	5.8%	-6.0%
15	77.3	-0.6%	-15.2%
16	77.5	-5.3%	-11.7%



## IES TM-30-2015 Test Report

### Product Mark

Product Type : Zoombar\_2.2\_24V\_562mA

Temperature : 22'C

Operator : EL

Remark: LUWA 700mA 5DEG

Manufacturer : Lumen Warm Inc.

Humidity : 19%

Test Date : 2020-04-22 10:56:23

